

ANNUAL REPORT 2025

SARA VIET NAM JOINT STOCK COMPANY

Address: Room 1406, Vinaconex Diamond Building, 459C Bach Mai Street, Bach Mai Ward, Hanoi City, Vietnam

Hotline: 02432007901

Code Stock: SRA



I. GENERAL INFORMATION

1. Information believe overview
2. Business sector rack and land table business
3. Information believe tissue image chest treatment, nest function terrible rack and chest reason set machine
4. Definition direction broadcast development
5. Risks

TOO PRESENTATION WALL AND RELEASE DEPLOYMENT

1. INFORMATION CONCEPT FAN

Name transaction:

LABOUR Y SHARE SARA VIETNAMESE MALE

Certificate receive post sign the transaction Number:
0101476769

Capital thing rules (in (February 23, 2021)
431,999,740,000 copper

Capital head private belong to owner own:
431,999,740,000 copper

Headquarters Main address : Room 1406, Vinaconex
Diamond Building, 459C Bach Mai Street, Bach Mai Ward,
Hanoi City

Electricity Phone:
02432007901

government:
<http://sara.com.vn>

Code stock:
SRA

Floor seal List:
HNX

First day of trading:
January 18, 2008



2021

The company has completed the share issuance. Individually for strategic partners to increase charter capital. 431,999,740,000 copper



2020

Completed the payment of stock dividends to shareholders. existing, increased charter capital to 251,999,740,000 copper



2019

Completed the issuance of shares to shareholders. presently day, increase capital thing rules go up 180,000,000,000 VND



2016

Broadcast onion private odd, increase capital thing rules go up 20,000,000,000 copper



2008

January 18, 2008, Labour ty main listing HNX with certificate code contract SRA



2004

Day April 12, 2004 Labour ty CP Sara Vietnamese Malemain awake Okay establish

2. BRANCH PROFESSION TERRIBLE BUSINESS

But Branch profession terrible rack main:

Medical equipment business

SRA is currently the official distributor of equipment products from major global manufacturers and corporations such as Tosoh, Codonics, Kusukusu, Kuraban, etc.

The company implements investment projects for hospital construction, provides complete medical equipment packages for hospitals; and undertakes leasing and investment projects for machinery and equipment under the healthcare socialization model, featuring high-tech, modern products imported from Japan, the US, the EU, etc., such as 640-slice CT scanners; superconducting MRI machines, ozone water endoscope cleaning machines, automated immunoassay analyzers, etc.

Clinic Business

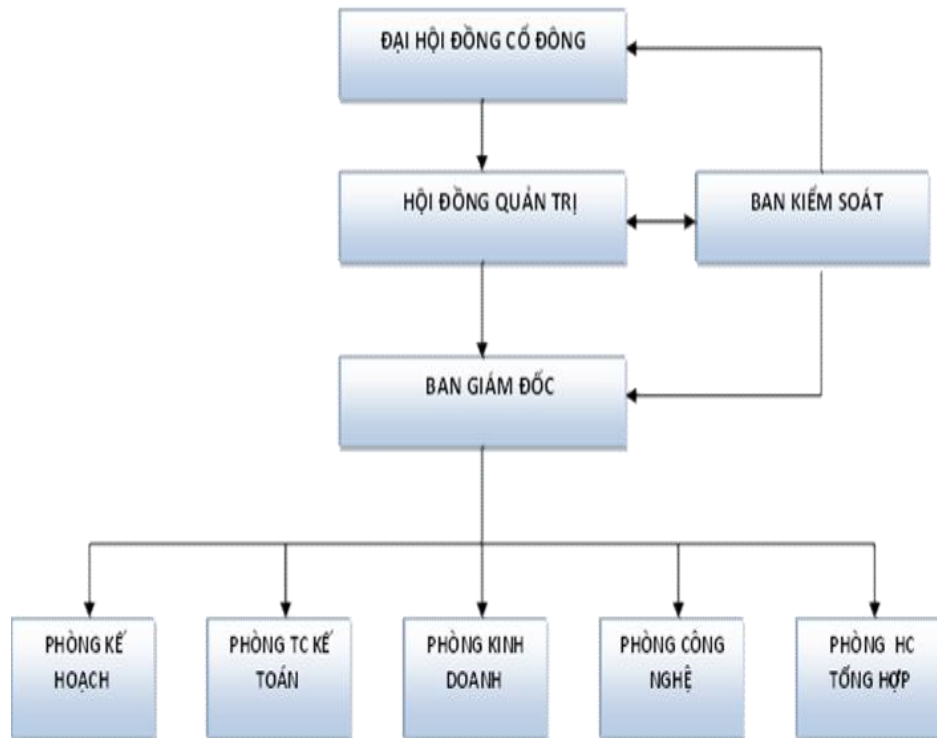
Medical testing clinic

The company operates in the healthcare services sector, specializing in providing medical testing services for the diagnosis, monitoring, and treatment of diseases. Its nationwide network of clinics aims to provide fast, accurate, and convenient testing services to people in many locations.



3. INFORMATION ON GOVERNANCE MODELS, BUSINESS ORGANIZATION AND MANAGEMENT QT SET MACHINE

Tissue management



Grand council neck winter

The General Meeting of Shareholders is the highest authority of The company, including its voting shareholders. General Meeting Shareholders perform their duties and exercise their rights as stipulated by law. Laws and company regulations such as approval of financial statements, Decision to offer shares for sale, dividend payment; decision to liquidate investment law, market development, marketing, technology, decision-making Investments that are worth more than 35% of the company's asset value. company, Council election administration and audit committee check,...

Festival copper chest treatment

- Council management is the foundation management of Labour company, have full authority On behalf of the Company, to decide matters relating to its purpose, the rights of the Company, except for matters falling under the authority of the General Meeting. copper neck winter.
- Sea predetermined structure nest function, set machine belong to Labour company;
- The company's investment and development strategy decisions are based on the following: item battle comb by the General Meeting of Shareholders information via;
- Appointing, dismissing, removing from office, and supervising the activities of the Board of Directors. director;
- Proposal to amend and supplement the Charter, report on the business situation of the goods. year, financial statements, annual settlement, profit distribution plan Profit and development direction, production and business development plan and echo book row year program General Shareholders' Meeting;
- and the other rights Okay rules predetermined in Thing rule.

Board check check

- The Supervisory Board consists of 3 members elected by the General Meeting of Shareholders. go out;
- The Supervisory Board acts on behalf of the shareholders to oversee all management activities. Management and operation

of production and business by the Board of Directors, Management Board Manager Company.

Board check check bear blame task before Grand festival copper
neck winter and France law about children job real presently
according to rights and meaning service like:

- Check search book plan maths and the Newspaper financial report main of the Company;
- Check search calculate fit reason, fit France belong to the active movement product export terrible and talent main Labour company;
- Check search job real presently the resolution decision, decision belong to Board of Directors;
- Presentation General Shareholders' Meeting newspaper urine examination search the newspaper urine talent main belong to Labour company, and also has the right to express its independent opinion on the results. fruit search the issues related to work business, active movement of Board of Directors and Board Supervisor director;
- And rights other rules predetermined in Thing rule.

rules Labour ty and hour head France law;

Total Supervisor director

- The CEO is appointed by the Board of Directors and is subject to supervision. of the Board of Directors and accountable to the General Meeting of Shareholders. the Board of Directors and the Law regarding the implementation of these rights and task the case deliver.
- The General Director is in charge of managing all production and business activities. rack belong to Labour ty according to Thing

- Develop and submit to the Board of Directors regulations for managing the sales department and planning. production planning export business;
- Sign conclude, real presently the contract according to rules definition of France law;
- Board of Directors' report on operational status and production results. The company is responsible to the General Meeting of Shareholders, the Board of Directors, and the law for children wrong criminal cause damage give Labour company;
- Implementing the resolutions of the Board of Directors and the General Meeting of Shareholders, the business plan. The company's revenue and investment plans have been approved by the Board of Directors and the General Meeting of Shareholders. information via;
- Market research school, declare waterfall and find sword guest row;
- The mission other Okay rules predetermined in Thing rule.

Room Onion main But Total fit

- Tham cunning help Board leader religion Labour ty only religion, thing onion, chestreason labour author onion main, chest treatment, France mechanism, culture letters save storage;

- Construction erect war comb, check check activities movement guarantee tell muscle team object matter, lip school do job belong to Labour company;
- Establish plan plan and chest reason work human resources in Labour ty.

Room terrible rack

- Establishing production development goals and strategies. business; Planning and organizing the implementation of the business plan. short term, central limit and long limit belong to Labour company;
- Coordinate with the departments and divisions under the company to conduct market research. school, declare waterfall and find sword guest row;
- Monitor and control all production and business activities of Labour ty;
- Total fit, fertilizer accumulate active movement business whole Labour company;
- Establish reports and other related documents labour property export Business for briefing sessions, board meetings, and shareholder meetings. often year, no often or according to Love bridge belong to the muscle mandarin function power;
- Draft contracts related to business activities. labour company;
- Managing, compiling statistics, and monitoring the progress and results of contract implementation. copper terrible cell border mandarin arrive active epileptic business of company;
- Check advance degree perform the attend case belong to Company;
- The mission other according to rules predetermined belong to Labour ty.

Room labour turmeric - skill technique

- Receiving information about projects, taking the lead, and coordinating with relevant parties. The functional department prepares designs and cost estimates, or reviews and provides opinions. Propose amendments and additions (if any) to the technical designs prepared by other units. establish;
- Chairing and coordinating with other functional departments in the planning process. direction case exam labour;
- Control of design, input documents, machinery, equipment, processes, and work. turmeric in too presentation product export; in time time thing adjust, handle reason give flush fit with love image real cell guarantee effective manufacture;
- Statistical analysis and evaluation of changes to the project's engineering design. mathematics in the past presentation exam labour;
- Receiving technical issues from customers, block, grant above and rooms other departments;
- Communicate and work with equipment and service providers to ensure labour favorable profit and information throughout;
- Training and skill development for technical staff and workers. technique; too presentation buy shopping, change new pages design bag technique;
- Monitoring the provision of technical and technological information to external parties. outside Labour company;

- Real presently function power chest reason talent



Room talent main But plan maths

- Assisting the company's leadership in developing strategies and formulating plans. financial planning, direction, management of financial work and accounting. Accounting aims to preserve and develop resources in the best possible way.the entire company;
- Plan financial plan annual and long limit belong to Company;
- Manage job import, export, exist row chemistry;
- According to follow labour in debt Right collect, Right pay;
- Establish newspaper urine talent main according to regulations defined;
- List declare goods tax month, precious, year according to regulations defined;

As of December 31, 2020, the five companies had six directly owned subsidiaries.

No.	Subsidiaries	Tax identification number	Benefit rate	Date of establishment	Head office address
1	Vietnam-Japan Joint Production Company	6300345260	98.22 %	June 3, 2021	Song Hau Industrial Park - Phase 1, Chau Thanh Commune, Can Tho City
2	Ha Long Osaka High-Tech Equipment Manufacturing Joint Stock Company	5702075936	99.00%	February 5, 2021	Lot A15, Nam Son Industrial Cluster, Ba Che Commune, Quang Ninh Province
3	Hau Giang Healthcare Clinic Joint Stock Company	6300346338	98.00%	July 23, 2021	No. 16, Street No. 14, Area 4, Vi Thanh Ward, Can Tho
4	Vietnam Medical Software Production Joint Stock Company	0109725491	98.00%	August 2, 2021	35 BT5 Phap Van Urban Area, Yen So Ward, Hanoi City
5	Tan Trieu Clinic Joint Stock Company	0109734577	98.00%	August 18, 2021	Floors 1 and 2, No. 1 Phuc Thinh, Cau Buou, Kien Hung Ward, Hanoi City
6	Soc Trang Healthcare Clinic Joint Stock Company	2200794804	98.00%	August 16, 2021	Ground floor, No. 438 Le Duan Street, Hamlet 4, Phu Loi Ward, Can Tho City

And there are 41 affiliated companies (information from the 2025 Corporate Governance Report).

FINANCIAL SITUATION OF SUBSIDIARY



VIETNAM-JAPAN PRODUCTION JOINT STOCK COMPANY			
	2024	2025	Billion Percentage (2025/2024)
Total talent product	144,173,077,739	152,176,474,961	105.55%
Total resources capital	144,173,077,739	152,176,474,961	105.55%
Revenue pure	32,334,042,480	33,122,443,478	102.44%
Profit before tax	19,563,804,648	9,411,069,679	48.10%
Profit after tax	19,563,804,648	9,411,069,679	48.10%

Source: Financial report of Vietnam-Japan Production Linkage Joint Stock Company

FINANCIAL SITUATION OF SUBSIDIARY

CÔNG TY CỔ PHẦN PHÒNG KHÁM TÂN TRIỀU			
	2024	2025	Tỷ trọng % (2025/2024)
Tổng tài sản	33.384.969.872	30,082,973,520	90.1%
Tổng nguồn vốn	33.384.969.872	30,082,973,520	90.1%
Doanh thu thuần	2.666.666.667	3,300,280,000	123.8%
Lợi nhuận trước thuế	(108.545.980)	175,009,938	-161.2%
Lợi nhuận sau thuế	(108.545.980)	175,009,938	-161.2%

Source: Financial report of Tan Trieu Clinic Joint Stock Company



FINANCIAL SITUATION OF SUBSIDIARY

CLINIC JOINT STOCK COMPANY HAU GIANG HEALTHCARE			
	2024	2025	Billion Percentage (2025/2024)
Total talent product	33,122,964,066	32,621,543,332	98.5%
Total resources capital	33,122,964,066	32,621,543,332	98.5%
Revenue pure	2,675,721,363		0.0%
Profit before tax	25,993,917	(532,075,596)	-2046.9%
Profit after tax	6,739,157	(532,075,596)	-7895.3%



FINANCIAL SITUATION OF SUBSIDIARY

SOC TRANG HEALTHCARE CLINIC JOINT STOCK COMPANY			
	2024	2025	Billion Percentage (2025/2024)
Total talent product	29,948,853,686	29,538,618,013	98.63%
Total resources capital	29,948,853,686	29,538,618,013	98.63%
Revenue pure	2,918,666,667		0.00%
Profit before tax	62,634,989	(311,475,415)	-497.29%
Profit after tax	50,032,064	(311,475,415)	-622.55%

(Source: Financial report of Soc Trang Healthcare Clinic Joint Stock Company)



FINANCIAL SITUATION OF SUBSIDIARY

COMPANY NECK PART SXTB CNC HA LONG OSAKA			
	2024	2025	Billion weight % (2025/2024)
Total talent product	92,023,632,155	115,098,623,001	125.1%
Total source capital	92,023,632,155	115,098,623,001	125.1%
Business collect pure	21,574,500,000	42,850,000,000	198.6%
Profit before tax	4,036,372,349	(1,421,068,531)	-35.2%
Profit after tax	3,229,097,879	(1,421,068,531)	-44.0%

Long Osaka High-Tech Equipment Manufacturing Joint Stock Company)

(Source: Financial report of Ha



FINANCIAL SITUATION OF SUBSIDIARY

COMPANY SHARE PRODUCT EXPORT PART SOFT Y TE VIETNAMESE			
	2024	2025	Billion weight % (2025/2024)
Total talent product	60,771,723,763	61,212,303,122	100.72%
Total source capital	60,771,723,763	61,212,303,122	100.72%
Business collect pure	18,887,918,334	109,199,995	0.58%
Profit before tax	3,537,388,304	(18,156,006)	-0.51%
Profit profit after tax	2,828,917,385	(18,156,006)	-0.64%

(Source: Financial report of Vietnam Medical Software Production Joint Stock Company)



The advantage belong to labour ty When To be labour active movement long years Have power trust on the market school design bag y cell Vietnamese Male

+ Labour ty Neck Part Sara Vietnamese Male with surface thick terrible experiment go up arrive above 15 year in territory abyss bow grant, install put, fix cure, tell onion, tell construction injured by the doctor cell

+ To be grand area belong to much company about design bag standard guess image image and very much company design bag y cell float language above position gender like Tosoh, Canon, Codonics, Kusukusu, Kato...

+ Team sleep skill monk service rich terrible experiment, specialist subject with presentation degree High, Okay dig create main company, Have possibility power install put, fix cure, tell onion and said maintain design specialized karma to give guest row 1 service complete good and degree believe rely High

We are fully confident in the quality of the equipment invested in the clinic, as well as its ability to operate optimally and ensure smooth operation. movement effective and maximum year old longevity.

The company has supplied medical equipment to hospitals of all sizes nationwide and has established cooperative relationships and connections with a team of doctors. Reputable experts from top-ranked hospitals nationwide such as Bach Mai, Viet Duc, Cho Ray, Central Lung Hospital, and Central Pediatric Hospital. central, Extra product Central ... Do So labour ty complete whole Have body fit author Okay with team sleep uncle officer y dozen and core pill rich terrible experiment, good specialist subject guarantee quality diagnostic amount guess, examination cure sick Good best .

+ The company has abundant investment capital and sufficient financial capacity to invest in facilities with the most modern and advanced equipment. Deploy PACS (Picture Archiving and Communication System) and LIS (Laboratory) systems. Information System to connect and give change data between the muscle department, hospital, room examination...

Utilizing this technology is key to creating a distinct competitive advantage for the company, enabling it to achieve this. With the aforementioned team of experts in diagnosing results, the company's customers have complete peace of mind. Diagnosis can be made by top specialists and doctors - this strongly attracts patients. This approach simultaneously meets the needs of high-income individuals who want to access these services. High-end and reputable. These systems will be deployed when there is a certain number of clinics and centers. heart old man bodybuilding wall together with a muscle team fierce the patient determined.

+ Medical examination and treatment under health insurance: with years of experience and good relationships with The insurance company will attract around 30,000 health insurance cardholders. But 35,000 cards (The number of cards varies depending on the location of the clinic/center and government regulations.) like actual situation cell land direction).

+ Sales team spanning all 64 provinces and cities nationwide: responsible for finding and nurturing leads. guest row stable give the room examination.

+ Foreign experts from the manufacturer come directly to Vietnam to provide maximum technical support. help bring give again guest row pandemic evening advantages best

Prize France belong to labour ty

With the aforementioned strong resources, we are confident in our ability to differentiate ourselves from other private establishments. We are currently looking to invest boldly in building a chain. modern, high-tech clinics are distributed. above throughout the whole country .



Land point build erect chain room examination

+Clinics are located in provinces and cities across the country. water. Base enter density population as well as situation In contributing to the overall economic development of the localities, the company will... Select provinces with high population density and a developed economy. similar counter-attack retreat up to head private.

+ Mobile medical examination areas: Focusing on industrial zones industry, industrial zone export in the conscious:

But Domain North: River Cradle, Sea Room, Sea Positive, HungYen, Ha Nam, Vinh Phuc, Bac Ninh, Quang Ninh, Bac Giang.

-Domain Male: Lake Chi Bright, Jar Thuan, Copper Deer, Jar Positive, LongAn, Ba Ria Vung Tau, Tay Ninh, Tien Giang, Binh Phuoc, An Giang, Silver Liao, Wharf Bamboo Vinh Long, Copper Tower, Tomato Quickly, Tea Vinh, NeedPoetry, Kien Giang, Hau Giang, Squirrel Moon

-Central Vietnam: Da Nang, Thua Thien Hue, Khanh Hoa, Quang Ngai, Quang Nam, Binh Dinh, Phu Yen, Gia Lai, Dak Nong, Dak Lak, Kon Tum Tue

4. DEFINITION DIRECTION RELEASE DEPLOYMENT

Item pepper belong to Labour ty

The year 2025 concluded amidst significant global economic fluctuations, leading to substantial changes in SRA's business operations as well as in the overall economy. Concerns, priorities, and resource allocation methods shifted noticeably. Facing these challenges, the company not only encountered pressure but also saw opportunities for innovation and breakthroughs.

The company has been reviewing and adjusting its business model, restructuring its investment portfolio, and improving the quality of its personnel and operational efficiency. During market research, the company observed a growing demand for home healthcare

services. In particular, the infusion center model – operated according to Japanese safety standards, specializing in providing intravenous medication, vitamins, protein, and health-enhancing therapies – is thriving in countries such as Japan, the United States, and Thailand. In Vietnam, this model is still relatively new and not yet widely implemented, but its potential for growth is enormous.

Recognizing this as a strategic opportunity, the company has identified the development of its network of clinics and infusion centers as a key focus for the coming period. At the 2025 Annual General Meeting of Shareholders, this strategy was presented and received strong support from shareholders. Following the resolution passed, the Board of Directors implemented a plan to contribute capital to establish a chain of testing and infusion centers, operating as a clinic company nationwide.

Alongside expanding its network, the company has established cooperative relationships with reputable international partners, notably Japanese brands such as Furuno and Tosoh, to provide biochemical and immunological testing equipment and modern machinery systems. Through this, the company has become a distributor of testing equipment in Vietnam, and has also finalized agreements with chemical suppliers, ensuring a stable supply and reasonable prices.

The company plans to invest in developing 60 to 80 testing and infusion centers nationwide. Each center will be equipped with automated biochemical, immunological, hematological, urine, and molecular biology testing systems, meeting international quality standards.

As of June 30th, the company had completed its capital contributions to 6 clinic companies and other companies.

are being expedited to ensure compliance with the regulations of the authorities.

Entering 2026, the company will continue to accelerate the implementation of its strategy

to develop a system of testing and infusion centers. The focus for the coming year includes:

- Complete the legal procedures and put the invested clinics into operation.
- Expand the network of centers in key provinces and cities.
- Strengthening international cooperation to update modern technology and improve the quality of healthcare services.
- Optimize operations and standardize operating procedures across the entire system.

The company's goal is to build a comprehensive and sustainable healthcare ecosystem and gradually establish itself as a leader in the healthcare services sector in Vietnam.

WAR MEDIUM AND LONG-TERM DEVELOPMENT STRATEGY



1. Development in BROAD DIMENSION

Target	Specific activities
Expanding the network of testing and infusion centers.	<ul style="list-style-type: none"> - Deployment from 60 - 80 centers nationwide - prioritizing major provinces and cities such as Hai Minh City, Da Nang...
Establish a nationwide network of clinics.	<ul style="list-style-type: none"> - Contribute capital and establish a clinic company model - Operate in a unified and professional manner.
Developing distribution channels for laboratory equipment.	<ul style="list-style-type: none"> - Exclusive distributor/dealer of equipment from Japan (Furuno, Tosoh) - Expanding into other medical equipment categories
Building a healthcare service ecosystem.	<ul style="list-style-type: none"> - Connecting testing centers – intravenous fluid administration – home medical examinations and treatment – remote health consultations

2. Development in

Focus on **improving operational efficiency, service quality, and sustainable competitiveness** .

- **Optimize operations**

- Standardize clinic operating procedures according to Japanese standards.
- Applying AI/IoT technology to laboratory management, patient coordination, and post-treatment care.



- **Human resource development**

- Establish an internal training academy for technicians, nurses, and specialist doctors.
- Collaborate with universities and medical training organizations both domestically and internationally to create a highly specialized workforce.

- **Investment in technology & R&D**

- Increase investment in **automated testing equipment and smart healthcare management systems** .
- Establish an R&D center to research new healthcare models and improve treatment and testing procedures.

- **Data management – security**

- Develop a comprehensive electronic medical record system, with encryption and storage according to international standards.
- Develop a smart healthcare platform that can personalize services for each customer.



The item pepper broadcast sustainable development firm

- Commitment to building and maintaining a system for managing resources. Use environmentally friendly machinery. Comply with regulations. environmental protection regulations as prescribed by law. law.
- Use resources (electricity, water, original fuels....)
- The company is committed to actively participating in activities for community, supporting charitable activities, sharing and helping to alleviate difficulties for the community (children affected by toxic substances). color orange, elderly people without a place to live girl title....)

5. RISK

In 2025 , the Vietnamese economy is expected to continue facing risks and challenges . This stems from both external and internal factors affecting the economy, particularly the volatile geopolitical situation worldwide, natural disasters, and disease outbreaks. It's still complex. Businesses face many types of risks, such as the following:

The type risk ro:

❖ Risk ro terrible cell:

- The resilience of the foundation economy position gender, love sales and invest Global data, according to the World Bank, remains at a low level.
- Military wars between countries, strategic competition, trade and technology tensions between countries. big still perform go out seconds straight and difficult attend guess.
- Heaven ears, flood overwhelm affect next background terrible cell whole bridge.

❖ Legal risks: SARA Vietnam Joint Stock Company operates under a corporate ~~not~~ neck part, all active movement belong to Labour ty Okay thing adjust by system system the text bimage rules criminal France law bag including: Law rack profession, Law proof contract, legal documents and decree, relevant guiding circulars. In addition , the company's business operations are affected by policies and regulations regarding ... lip school, medical, ...

❖ Foreign exchange rate risk: SRA operates in the field Trade, buying and selling of imported medical machinery and equipment. Imports from Japan, the US, etc., therefore changes in foreign exchange rates. The situation will directly affect the business operations of Labour ty.

❖ Interest rate risk: To serve business purposes, most investments are made. All businesses utilize borrowed capital. The impacts include: Interest rates on loans – the cost of capital – will have an impact. spend fee manufacture business and head private of the public ty.





II. LOVE IMAGE ACTIVITY MOVIE IN YEAR

1. Operational situation movement manufacture business
2. Organization and core The
3. Situation invest, situation real presently the attend case
4. Situation talent main
5. Muscle structure neck east, capital change invest belong to owner day
6. Newspaper urine author interconnected mandarin arrive environment and commune festival

1. LOVE IMAGE ACTIVITY MOVABLES EXPORT BUSINESS

**Conclude fruit terrible rack Labour
mother's breast**

Unit of measurement: VND

Target	2024	2025	Proportion 2025/2024
Revenue from sales and services	64,930,829,630	37,893,259,556	58.36%
Financial revenue	2,600,914,278	8,500,116,351	326.81%
Financial costs	2,000,582,796	4,458,990,926	222.88%
Cost of goods sold	696,461,687	507,437,320	72.86%
Business management costs	120,568,032	4,056,266,683	3364.30%
Profit before tax	7,429,328,445	2,458,341,623	33.09%
Net profit after tax	6,308,609,510	2,458,341,623	38.97%

(Source: Audited separate financial statements for 2024 and 2025)

Net revenue in 2025 reached VND 37.89 billion, equivalent to 58.36 %. Compared to 2024 , after-tax profit in 2025 reached VND 2.458 billion . similar right 33.09 % so with the year 2024 .

Consolidated business results:

Unit of measurement: VND

Target	2024	2025	Proportion 2025/2024
Revenue from sales and services	145,988,345,141	117,275,183,029	80%
Financial operating revenue	1,031,871,045	361,245,450	35%
Financial costs	2,192,931,592	10,453,562,168	477%
Cost of goods sold	(667,820,516)	1,230,556,999	-184%
Business management costs	7,359,658,039	5,481,755,026	74%
Profit before tax	31,480,788,342	1,261,645,692	4%
Net profit after tax	29,486,982,133	1,263,985,250	4%

(Source: Audited consolidated financial statements for 2024 and 2025)

Sales revenue and provide consolidated services in 2025 reached 117.275 billion VND, equivalent to equivalent to 80 % compared to 2024 ; Net profit after tax in 2025 reached 1,263 billion VND similar right 4 % so with year 2024 .

LOVE REALISTIC IMAGE SO WITH PLAN PLAN

Unit of measurement: VND

Financial indicators (Consolidated financial statements)	To be implemented by 2025	Plan 2025	Percentage (% Actual/Planned)
Revenue from sales and services	117,275,183,029	150,000,000,000	78%
Net profit after tax	1,263,985,250	30,000,000,000	4%

(Source: Business plan for 2025 approved by the 2025 Annual General Meeting of Shareholders)

And the consolidated financial statements were audited in 2024.

The business results for 2025 reached 78% of the planned target. This was mainly due to a decrease in revenue from subsidiaries and investments in joint ventures and associated companies that had not yet yielded profits.

HỘI ĐỒNG QUẢN TRỊ	
KAZUYA KIRINO	<ul style="list-style-type: none"> - Chức vụ: Chủ tịch HĐQT – Thành viên HĐQT độc lập - Năm sinh: 1973 - Trình độ chuyên môn: Cử nhân - Số lượng CP sở hữu: 0 - Tỷ lệ sở hữu: 0 - Bổ nhiệm ngày 28/06/2022
HOÀNG VĂN BA	<ul style="list-style-type: none"> - Chức vụ: Thành viên HĐQT - Năm sinh: 1976 - Trình độ chuyên môn: Cử nhân - Số lượng CP sở hữu: 0 - Tỷ lệ sở hữu: 0 % - Bổ nhiệm chức vụ Thành viên HĐQT ngày 24/06/2022
NGUYỄN MINH TÂM	<ul style="list-style-type: none"> - Chức vụ: Thành viên HĐQT - Năm sinh: 1992 - Trình độ chuyên môn: cử nhân kinh tế - Số lượng CP sở hữu: 0 - Tỷ lệ sở hữu : 0 - Bổ nhiệm ngày 24/06/2022

BAN KIỂM SOÁT	
TRINH THỊ DUYÊN	- Chức vụ: Thành viên BKS
	- Năm sinh: 1979
	- Trình độ chuyên môn: cử nhân kế toán
	- Số lượng CP sở hữu: 0
VŨ THỊ KIM NGÂN	- Tỷ lệ sở hữu: 0
	- Chức vụ: Thành viên BKS
	- Năm sinh: 1995
	- Trình độ chuyên môn: cử nhân kế toán
THÁI THỊ THÙY DUNG	- Số lượng CP sở hữu: 0
	- Tỷ lệ sở hữu: 0
	- Chức vụ: Trưởng BKS
	- Năm sinh: 1988
	- Trình độ chuyên môn: cử nhân Kinh tế
	- Số lượng CP sở hữu: 0
- Tỷ lệ sở hữu: 0	
- Bổ nhiệm: ngày 17/6/2024	

BAN LÃNH ĐẠO	
NGUYỄN MINH TÂM	-Chức vụ : Tổng giám đốc
	-Năm sinh: 1992
	-Trình độ chuyên môn: cử nhân kinh tế
	-Số lượng CP sở hữu: 0
	-Tỷ lệ sở hữu : 0
PHẠM THỊ MINH THƯ	-Bổ nhiệm ngày 21/08/2020
	-Chức vụ: Kế toán trưởng
	-Năm sinh: 1977
	-Trình độ chuyên môn: cử nhân kinh tế
	-Số lượng CP sở hữu : 0
-Tỷ lệ sở hữu: 0	

NUMBER OF STAFF CORE TABLETS

and broadcast development belong to

ST Tieu heart fertilizer Type Number Amount Ratio

1	Trình độ lao động	34	100%
	Grand learn, on the highway Study	33	
	Cao đẳng	97%	3%
	Central level	00	
	Phổ thông	0	0
	Male	18	53%
	Female	16	47%

Main book core the

Source core force weak accuse mandarin weight row head give the exist in

Company, therefore, the Company has and continues to have many reasonable policies for its employees. movement attachment do long-term with responsibility and effectiveness fruit High best.

- Labour ty run out of strength uncle weight arrive labour author dig create and rinse nutrition source corestrong, with policies that encourage and facilitate learning for staff members. Exchange of knowledge and skills in the workplace. In addition, staff members in Labour ty also Have rights Okay topic export with Labour ty job post sign virus We offer various types of training, from short-term to long-term, both domestically and internationally, to enhance knowledge and skills, as well as to achieve career advancement within the company.
- In addition to the above policies, the company also has many other policies and fair benefits to motivate and encourage employees, such as:
- Performance-based bonus system.
- Annual leave and vacation entitlement
- Other regulations stipulate the rights of workers, such as the right to participate in political and social organizations, and professional clubs .

2 Genders calculate 34 100%



2. LOVE IMAGE TẠI MAIN

Target	Year 2024 (million VND)	Year 2025 (million copper)	Ratio 2024/2023 %
Total price treatment talent product	738,470	690,545	94%
Revenue pure	145,957	117,275	80%
Net profit from operations movement terrible rack	31,359	1,296	4%
Profit other	120.9	(34,438)	-28%
Profit before tax	31,480	1,261	4%
Profit profit after tax	29,486	1,263	4%

(Source: Audited consolidated financial statements for 2023 and 2024)



Các chỉ tiêu	Năm 2025	Năm 2024
1. Chỉ tiêu về khả năng thanh toán		
+ Hệ số thanh toán ngắn hạn: TS ngắn hạn/ Nợ ngắn hạn	0.768	1.274
+ Hệ số thanh toán nhanh: TS ngắn hạn - <u>Hàng tồn kho/</u> Nợ ngắn hạn	0.313	1.012
2. Chỉ tiêu về cơ cấu vốn:		
+ Hệ số nợ/ Tổng tài sản	0.141	0.101
+ Hệ số nợ/ Vốn chủ sở hữu	0.165	0.1120
3. Chỉ tiêu về năng lực hoạt động.		
+ Vòng quay hàng tồn kho: Giá vốn hàng bán/HTK bình quân	1.987	5.5816
+ Doanh Thu Thuần/tổng tài sản:	0.151	0.20
4. Chỉ tiêu sinh lời		
+ Hệ số lợi nhuận sau thuế/ Doanh thu thuần	0.011	0.20
+ Hệ số lợi nhuận sau thuế/ Vốn chủ sở hữu	0.002	0.044
+ Hệ số lợi nhuận sau thuế/ tổng tài sản	0.0016	0.040
+ Hệ số lợi nhuận từ hoạt động sản xuất kinh doanh/ Doanh thu thuần	0.011	0.21



Those variable big movement Have body image benefit love image talentmain belong to Nest function onion since time point conclude train year talent main near the best.

Resolution decision Grand festival copper neck winter no often year 2020 number Resolution No. 02/2020/SRA/NQ-ĐHĐCĐ dated December 13, 2020, approved the plan. Issuing shares to increase charter capital from VND 251,999,740,000 to 431,999,740 copper.

- Month February 2021, Labour ty Satisfied complete wall batch broadcast onion neck ticket private odd increase capital thing rulesFrom 252 billion VND to 432 billion VND, the additional capital was used by the company for further investment.machinery, equipment, and additional working capital to support the company's business operations. company, thing This Have body will contribute part do family increase rack collect, profit profit belong to Labour ty inyear 2021.

MUSCLE STRUCTURE NECK WINTER

STT	Tên cổ đông	Số lượng cổ đông	Số lượng cổ phần	Tỷ lệ sở hữu (%)	Tỷ lệ biểu quyết (%)
A	Cổ đông trong nước, nước ngoài	2750	43.199.974	100%	100%
1	Cổ đông trong nước	2725	43.032.361	99,61%	99,61%
1.1	Tổ chức	7	3.394.436	7,86%	7,86%
1.2	Cá nhân	2718	39.637.925	91,75%	91,75%
2	Cổ đông nước ngoài	25	167.613	0,38%	0,38%
2.1	Tổ chức	5	114.899	0,26%	0,26%
2.3	Cá nhân	20	52.714	0,12%	0,12%
3	Cổ phiếu quỹ		0		
Tổng cộng			43.199.974	100%	100%

- Code stock: SRA
- Floor seal List: HNX
- Day transaction head First: January 18, 2008
- Total number of shares Section: 43,199,974 neck part.
- Type neck part: Neck part general.
- Block quantity stocks are save onion: **43,199,974 CP**
- Mass neck Cash voucher: 0 CP

Source: SRA shareholder list as of May 29, 2025.

CHANGES IN EQUITY

ST T	Hình thức	Số lượng	Giá trị	Ghi Chú
1	Lần đầu	1.000.000	10.000.000.000	Năm 2008
2	Phát hành riêng lẻ	1.000.000	10.000.000.000	Năm 2010
3	Phát hành cho cổ đông hiện hữu	16.000.000	160.000.000.000	Năm 2019
4	Phát hành cổ phiếu chi trả cổ tức	7.119.974	71.199.740.000	Năm 2020
5	Phát hành riêng lẻ	18.000.000	180.000.000.000	Tháng 01/2021
Tổng cộng		43.199.974	431.999.740.000	

In November 2020, the Company completed a share issuance to pay dividends to existing shareholders, increasing its charter capital from VND 180,000,000,000 to VND 251,199,740,000.

In January 2021, the Company completed a share issuance to private shareholders, increasing its charter capital from VND 251,199,740,000 to VND 431,199,740,000.

Report on the results of the dividend share issuance

Execution ratio: 100:40 (Shareholders owning 100 existing shares will receive an additional 40 new shares)

- Purpose of issuance: Payment of 2019 dividends in shares
- Record date for dividend payment: November 6, 2020
- Last registration date: November 6, 2020
- Number of shares distributed: 7,199,974 shares
- Number of shareholders receiving shares: 1,812 shareholders
- Method of handling fractional shares: The number of shares issued to pay dividends to each shareholder will be rounded down to the nearest whole number. Any fractional shares resulting from rounding down (if any) will be canceled and recorded as additional retained earnings to be carried over to the following year.
- Date of registration for additional shares issued to pay dividends at the Securities Depository Center: December 4, 2020
- Official trading date of shares issued to pay dividends for 2019 on HNX: December 28, 2020

6. NEWSPAPER FOX ACTION MOVIE LIEN MANDARIN TO THE LIPS SCHOOL

Newspaper urine author movement border mandarin arrive lip school

❖ **Manager reason source ingredient**

- Total quantity original object the Okay history use to product export and closepackage products product and pandemic service main belong to organization in Year: None
- Newspaper urine billion rules part hundred original object the Okay re criticize history use to product export product product and translation service main belong to nest function: none

❖ **Pepper energy quantity**

- Power quantity pepper collect direct next and cockroach next : Are not
- Power quantity season saved information via the bright ants history use power quantity effect fruit: Are not
- The newspaper urine bright ants season savings power Quantity: Are not

❖ **Pepper water absorption**

Sara Vietnam Joint Stock Company is a company that operates primarily inIn the commercial sector, water usage is solely for office purposes. room.

❖ Newspaper urine border mandarin arrive active movement market school capital greenin the direction guide of the State Securities Commission

- The company is currently developing and implementing strategies for growth. active movement market school capital green in the direction guide belong to UBCKNN

❖ **Tuan legal procedures about tell guard environment**

- Number time bag handle punish vi criminal by Are not hour head law France and therules predetermined about lip school: Are not Have

- Total number money bag penalties vi criminal by Are not hour head law France and the rules predetermined about lip school: Are not Have

❖ **Newspaper fox link mandarin arrive blame task**

opposite to with add copper land direction

- Responsibility towards the local community is always a priority for the company. The company is committed to implementation. It actively contributes and supports this initiative.the fund at the local direction.



7. MAIN BOOKS MANDARIN ARRIVE PEOPLE LABOR MOVIE

Discard benefit benefits People tuberculosis movement

The company always ensures the interests of its employees through its policies. Competitive salaries, bonuses, and benefits create favorable conditions for employees. This encourages employees to work with peace of mind, remain committed to the company, and contribute to its success. item pepper broadcast development durable firm rack profession.

Main book money wage

The company evaluates job performance annually based on objectives. fire work, results of work performed by each individual and department to do muscle team consider exam race reward last year.

Muscle craft fertilizer combination collect import labour equal, fit reason flush fit with presentation degree power force each fish core. Row year, People tuberculosis movement Okay see x et and fight price to thing adjust collect import.

wage jar army 2025 14,000,000 VND/person/month



Main book praise reward

To encourage employees to perform their jobs well, the company ban onion main book praise reward above effect fruit labour job.

Main book dig create

The company always creates opportunities for employees to participate in various activities. lock dig create help cadre set core pill Have children ants awake, skill power necessary to complete tasks and advance your career at the company. ty.

Perform the work well. human resources and recruitment, construction long-term human resource training and development plan and response Okay the broadcast development belong to labour ty.





III. REPORT FOX AND FIGHT PRICE BELONG TO COMMITTEE THING ONION

- Evaluate active production terrible rack year 2024
- Situation talent main
- Those cabbage advance about muscle structure nest function, main management books
- Bell plan development development of Labour ty in year 2025

ACTIVITY MOVIE PRODUCTION AND BUSINESS BUSINESS YEAR 2025

In recent years, Vietnam's economy has grown rapidly, leading to an increased demand for machinery. Medical equipment prices have increased. Economic growth, Along with that, people's incomes are also improving, and the incomes of workers are increasing, leading to increased demand. care squirrel strength Strong and demand history use page medical equipment presently grand day the more increase High.

The management team always focuses on improving business performance and seeking investment and business opportunities. New ventures to contribute to revenue and profit growth. In 2020, the Company also collaborated on investments with Joint Stock Company. Aiko International Group's contribution to the project of installing Spect systems and equipment for Spect Hotlab and Hotlab Lot at the Hospital. Phu Tho Provincial General Hospital

Labour ty Satisfied design establish Okay and du maintain mandarin system fit author with the opposite to author Have power trust in and outside water. Beside edge there, Labour tyIt has also established extensive relationships with hospitals and medical centers, and currently has medical centers and hospitals. institute To be client often through of Labour such as: Multi-specialty hospital provincial department Phu Tho, Phu Tho Obstetrics and Pediatrics Hospital



In the long term, there are many advantages and opportunities for the Vietnamese economy in general; however, in the short term, the Vietnamese economy is facing unpredictable fluctuations. In 2025, the global economy is facing major challenges, rapid and unpredictable changes, and high instability; inflation, although lower than in 2024, has not yet returned to pre- COVID- 19 pandemic levels. Strategic and geopolitical competition among major powers, military conflicts between countries; natural disasters, climate change, storms, droughts... have increased risks to the financial and monetary markets, energy security, and global food security. In the context of an unpredictable global economy, Vietnam is also inevitably affected: rising inflation reduces consumer spending, businesses lack orders; rapidly increasing bank interest rates make it difficult for businesses to access capital for production investment while capital costs continue to rise. Despite a challenging year, Sara Vietnam Joint Stock Company is still striving to develop strategies to optimize profits and ensure the interests of shareholders and investors.



FINANCIAL SITUATION ACCORDING TO THE CONSOLIDATED REPORT 2025 (Self-prepared)

Asset situation

No.	Item	First issue of the year (million VND)	Year-end issue (million VND)	Percentage (%)
1	Current assets	91,857	84,258	91.73%
2	Long-term assets	646,612	690,545	106.8%
	Total assets	738,470	774,803	104.92%

Current assets in 2025 The decrease was mainly due to a reduction in short-term receivables from VND 63,867 billion to VND 28,091 billion; inventory increased from VND 17,372 billion (at the beginning of the year) to 49.889 billion VND (year-end); Long -term assets increased mainly. Long-term financial investments increased from VND 618.155 billion (beginning of year) to VND 666.456 billion (end of year) in affiliated companies and equity investments in other entities.

Debt situation

No.	Item	First issue of the year (million VND)	Year-end issue (million VND)	Percentage (%)
1	Short-term debt	72,094	109,683	152.14%
2	Long-term debt	2,294	0	%
	Total liabilities	74,389	109,683	147.45%

Short-term debt increased from 72,389 The amount increased to VND 109,683 billion , mainly due to an increase in financial borrowings (during the year, the company borrowed VND 23,660 billion from HDbank - Quang Ninh Branch and short-term loans from other individuals and organizations). Other short-term payables also increased from VND 1,033 billion. billion VND increased to 22,617 billion VND

Total liabilities increased from VND 74,389 billion to VND



109,683 billion during the year .

PLAN PLAN ACTIVITY MOVIE YEAR 2026

In 2026 , the company will focus on the following areas: a project for a clinic specializing in home-based testing and intravenous fluid administration, and a project related to environmental issues. school; investment partnership in medical image storage and transmission systems. at the hospital (PACS); invest build build factories product Exporting medical equipment and supplies; selling medical equipment; social networking. chemistry y cell,...

The business plan was formulated with several specific objectives. like after:

Closely monitor the market and ensure the smooth maintenance of business operations. rack belong to labour company;

Next custom head private, open wide the territory abyss terrible business, head private enter attend case new soon deployment;

Improving the quality and professionalism of human resources. officials, staff labour company, human resource training with range long limit;

Are not stop improving matter quantity pandemic service;

Effective cost management, thorough cost saving, and guaranteed business efficiency. business.

Based on the direction of the Board of Directors, the Executive Board determines The development plan for the coming years focuses on the following areas: Project: Home-based clinic specializing in laboratory testing and intravenous fluid administration. , environmental projects; investment linkage for storage and broadcasting systems. Medical imaging at hospitals (PACS); investment in the construction of manufacturing plants. Export medical equipment and supplies; Selling medical equipment, socialized healthcare. ...

With the aim of achieving development and stability in the medium and long term, the plan Business plans for the following years are based on growth. 15%-20% so with conclude fruit Satisfied obtain Okay. One number item pepper old man body like after:

- Stay close to the market and ensure consistency. maintain good business operations belong to Labour company;
- Continue investing, expanding business areas, and investing in



projects. case new about to deployment;

- Lift High matter quantity source core force, calculate specialist profession belong to cadreset, core pill in labour company, dig create source core force with range looklong term;
- Are not stop improving matter quantity pandemic service;
- Manager glass Good spend fee, eliminate to season thrifty, guarantee warranty fruit terrible d;

IV. ATTACK PRICE BELONG TO FESTIVAL COPPER MANAGER TREATMENT

In 2025, the Executive Board proactively coordinated and reported to the Board of Directors to ensure that the Board was always aware of the Company's business operations, thereby formulating directions and strategies that were closely aligned with actual operations. Furthermore, close coordination between departments within the company contributed to the stability and sustainability of the Company's operations.

Although the business results for 2025 did not meet the set plan, the Board of Directors made efforts in management and operation, while strictly adhering to the procedures and regulations in business operations in accordance with the Charter, regulations and current laws.

Board of Directors' Orientation:

Continue to closely monitor and promote the construction projects of the "Centralized Medical Waste Treatment Area using Smokeless Negative Pressure Incineration Technology". Expand and put into operation a chain of clinics and testing centers and home-based intravenous fluid administration centers. Simultaneously, in 2024, the Board of Directors aims to expand into several new business sectors such as the production and distribution of solar energy; and the construction of factories producing medical equipment and supplies, etc.



V. MANAGEMENT LABOUR Y

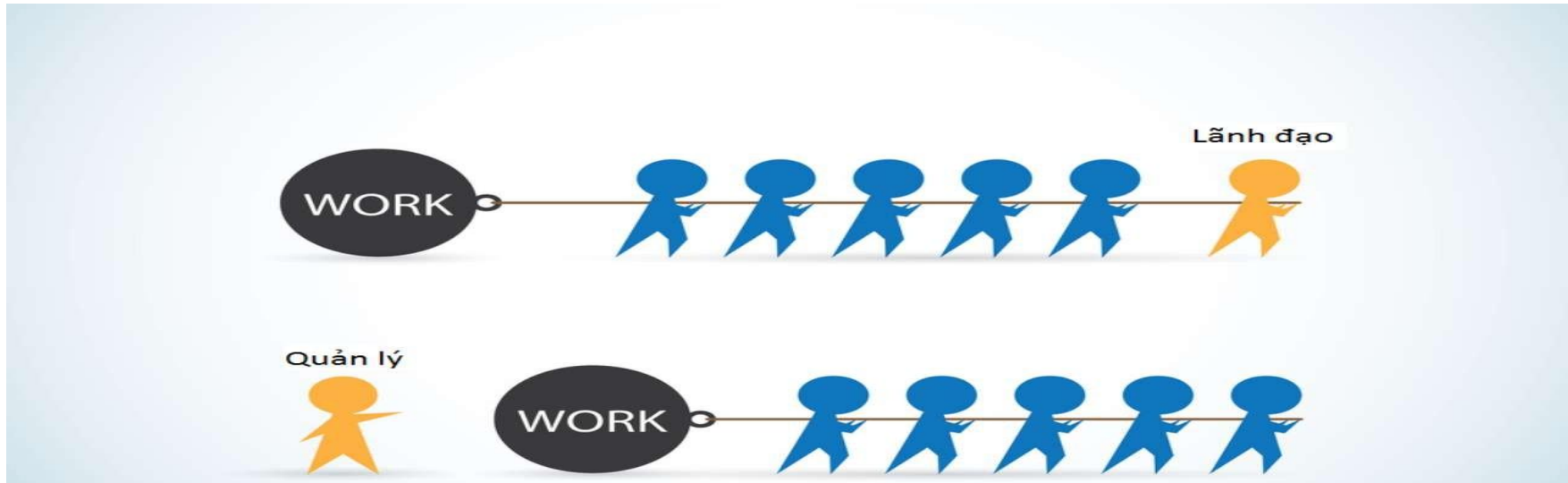
- Board Check number
- Board of Directors

Festival copper chest treatment

The Board of Directors is the governing body of the Company, with full authority to act on behalf of the Company to decide on matters relating to its interests. of the Company, except for matters falling under the authority of the General Meeting of Shareholders. The Board of Directors regularly monitors operations. terrible business, active movement check check internal set and active movement chest reason risk ro belong to Labour ty. Festival copper chest treatment belong to Labour ty including 3 People by Grandcouncil neck winter pregnant.

Board check check

Board check check To be muscle mandarin check search active movement talent main belong to Labour company, supervisor close job accept onion craft degree lymph nodes maths, active movement belong to system The company's internal audit and inspection system. The Supervisory Board reviews the annual financial statements and examines each specific issue. mandarin arrive active movement talent main When consider see need design or according to decision predetermined belong to Grand festival copper neck winter or according to Love bridge belong to neck winterlarge. The Supervisory Board reports to the General Meeting of Shareholders on the accuracy, truthfulness, and legality of accounting documents, books, and financial reports. main and active movement of the system system check check Internal. Committee check check belong to Labour ty Have 3 people Grand council neck winter pregnant.



BOARD OF DIRECTORS

1. Information about the members of the Board of Directors for the 2022-2027 term:

No.	Board Member	Position (Independent Board Member, Non-Executive Board Member)	Date of commencement/cessation of membership on the Board of Directors/independent board member	
			Appointment date	Dismissal date
1	Hoang Van Ba	Board Member	June 24, 2022	
2	Kazuya Krino	Chairman of the Board - Independent Board Member	June 24, 2022	
3	Nguyen Minh Tam	Board Member	June 24, 2022	

2. Board meetings.

No.	Board Member	Number of Board of Directors meetings attended	Valid meeting attendance rate	Reasons for not attending
1	Hoang Van Ba	August 8th	100%	
2	Kazuya Krino	August 8th	100%	
3	Nguyen Minh Tam	August 8th	100%	

The the meeting belong to Festival copper chest treatment in year 2025

In 2025 , the Board of Directors held regular and extraordinary meetings to provide timely operational directions and guidance . the work manufacture terrible rack of the public ty.

No.	Resolution number	Day	Content
1	0601/2025/NQ-HĐQT	January 6, 2025	Regarding the transfer of capital contributions in Phu Tho Provincial Obstetrics and Pediatrics Hospital
2	0601.01/2025/NQ-HĐQT	January 6, 2025	Regarding capital contributions for the establishment of companies
3	1701/2025/NQ-HĐQT	January 17, 2025	Regarding the second transfer of capital contributions in Phu Tho Provincial Obstetrics and Pediatrics Hospital.
4	2001/2025/NQ-HĐQT	January 20, 2025	Regarding the change of the auditing firm for the Company's 2024 financial statements.
5	1102/2025/NQ-HĐQT	February 11, 2025	Regarding the change of the company's chief accountant.
6	0805/2025/NQ-SRA	May 8, 2025	Subject: Approval of the organization of the 2025 Annual General Meeting of Shareholders
7	Resolution No. 2005/2025/NQ - Board of Directors	May 20, 2025	Regarding the change of the company's chief accountant.
8	2306/2025/NQ-SRA	June 23, 2025	Subject: Approval of personnel for the Presiding Committee of the 2025 Annual General Meeting of Shareholders
9	1507/2025/NQ-HĐQT	July 15, 2025	Regarding the signing of a contract for the review and audit of the Company's financial statements for the year 2025.
10	2512/2025/NQ-HĐQT	November 25, 2025	Year-end review meeting 2025

The Board of Directors' oversight of the General Management Board:

- Regularly monitor the implementation of the production plan. Business operations. The Board of Directors is required to submit regular reports. Analyze performance results across each production period. Propose solutions. in a timely manner lift High effective product menstruation business.
- Monthly company-wide meetings are held with the following participants:bag including: Festival copper chest treatment, Board check check, Board Total supervisor Directors and heads of departments and workshops to assess the situation. Performing production and business tasks, results achieved, proposals make a plan spend Savings for the units resolve within the next month. problems that still exist in the production and business process of Labour ty.
- Often through reminder tar pedestal director Board Total supervisor director realpresent report and Disclose information in accordance with regulations. belong to France law current.

Activities of the Board of Directors' subcommittees:

- Festival copper chest treatment SRA information via wall establish 2 small ban belong toBoard of Directors including:
- Subcommittee on Human Resources, Salaries, and Benefits: Provides advice and recommendations to The Board of Directors' role in planning human resource development strategies.power, senior management, labor management and moneySalary and bonuses within the company; Develop and implement policies management policies related to personnel organization Labour ty.
 - Subcommittee on Development Policy: Identifying Development Strategiesdevelopment, goals and plans, as well as performance indicators. Company's fundamental analysis; Identifying operational priorities; Building Develop dividend policies; Evaluate the long-term effectiveness of operations. movement belong to Labour ty.

The plan plan, predetermined direction belong to Festival copper chest treatment

During that time in the coming period, next custom real currently according to predetermined direction:

- Closely monitor the market, ensuring the stability and expansion of core business operations. field active movement, guarantee tell quality pandemic service.
- Mobilize and effectively utilize capital resources to develop and expand strategic projects. comb.
- Enhance corporate governance capabilities. Focus on directing efforts to improve efficiency.business operations. Continued restructuring contributes to profit growth for companies. ty member.
- Expand and strengthen cooperation with domestic and international organizations to jointly achieve catch muscle festival, together develop.
- Strengthen inspection and supervision to prevent business risks and ensure safety. capital of neck winter.
- Building an advanced and distinctive corporate culture, and training human resources in line with it. effect business results.
- Broadcast Huy the source force presently Have and fix children exist in.
- Selecting investment categories and investment scale to further expand and develop production. terrible business, give labour ty luxurious one stage paragraph broadcast development new, increase leader chief about rules tissueand economic efficiency.

- Continuously improving operational efficiency of the Board of Directors based on strict adherence to the legal regulations, company charter, group to be honest in performing the supervisory function Closely monitor the activities of the Board of Directors with regard to the Executive Board. administration, management staff, and operational aspects. belong to Labour ty.
- Board of Directors and Board thing onion practice central all resources to ensure production efficiency Business in 2024 and the following years according to.



Members and structure of the Supervisory Board

No.	Supervisory Board Member	Position	Start date/No longer a member of the Supervisory Board	Number of meetings	Attendance rate
1	Do Thi Huong Thu	Supervisory Board Member	Appointed June 24, 2022	6/6	100%
2	Dau Thi Lieu	Supervisory Board Member	Appointed June 24, 2022	6/6	100%
3	Vu Thi Kim Ngan	Supervisory Board Member	Appointed June 24, 2022	6/6	100%

COMMITTEE CHECK REVIEW

Active movement belong to Inspection Committee check in year 2025

The Supervisory Board has regularly monitored the activities of The company. The members of the Supervisory Board have strictly complied. presently Perform assigned tasks well and regularly exchange feedback and evaluations. This is to provide timely feedback on the company's operations to the Board. chest treatment and Board Supervisor director.

- Review the legality, procedures, and processes for issuing Resolutions and Decisions. Decisions of the Board of Directors and the General Management Board in 2024 according to the rules definition of France law and belong to Labour ty.
- Participate in discussions and provide recommendations to the Board of Directors and the General Management Board. Labour ty about the problem topic relate to arrive active movement belong to Labour ty.
- Inspect and monitor the implementation and results of the Resolution. Annual General Meeting of Shareholders 2025 for the Board of Directors and the General Management Board supervisor director .

- Proposal to select an independent auditing firm to conduct the audit of the report.annual financial statements, including the financial statement review period 6 month and newspaper urine talent main conclude train year degree plan maths.
- Reviewing quarterly, semi-annual, and annual financial statements to assess their validity. The accuracy and fairness of financial data, in accordance with standards. squid, craft meter maths and main book talent main presently onion belong to Vietnamese Male.
- Monitor the company's compliance with information disclosure regulations. according to the rules definition of France law

Monitoring the implementation of the General Meeting of Shareholders' Resolutions winter 2025

In 2025, the Board of Directors and the Management Board The director has performed well. The task was decided in the Shareholders' General Meeting Resolution of the year 2025 like:

- Implement and adhere to the business plan approved by the General Shareholders' Meeting. winter information via in Grand festival antique winter year year 2025 ;
- Festival copper chest treatment and Board Supervisor director Satisfied real presently job hour head according to The provisions of the law and the company's charter regarding management and operation. onion Labour company;

Supervisor close love image talent main year 2025

The Supervisory Board will communicate with the independent auditor regarding the scope of the audit. audit results and other issues of concern in the audit system check internal set.

Definition week review distribution accumulation information believe, number the above the newspaper financial report main. Apartment keep enter the newspaper urine predetermined week and number the fertilizer accumulation by Board Supervisor director presentation display in the the meeting belong to Board of Directors, The Supervisory Board's assessment:

- Key indicators about love image in debt, capital get a loan, clarity amount, effective history use talent product, provision all reserves obtain.
- The company's revenue and profit results from its business operations. Although the company hasn't achieved its set goals yet, the results are still quite promising. in love image year 2025 much difficult towel, patient movement.
- 2025 financial report fully reflects the situation. This includes the company's business and financial performance, as presented. Present reports according to prescribed templates, in compliance with standards. squid plan maths Vietnamese Men and the rules current regulations.

Supervisor close love image active movement year 2025

License plate Satisfied according to follow close Star information via job give change often through and close contribute idea ants with Festival copper chest treatment and Board Supervisor director about chest treatment Risks in the Company's investment and business operations. Those risk ro broadcast presently information via active movement check check will Okay ants resolution in time time aiming reduce minority risk ro, compartment prevention or divide shall risk ro flush fit rules predetermined belong to France law and guarantee tell profit benefits belong to the beside border mandarin.

The Supervisory Board found no significant risks in the process system. The reasons belong to Labour law, also like job hour head France law, things rules and regulations belong to the individual and unit relate to.



Bell plan active movement belong to Board check check in year 2026

Continue to carry out inspection and supervision work according to assigned functions and duties. regulations in Law Business profession and the Charter Labour ty.

- Conduct regular and unscheduled inspections and controls. related to the Company's production and business aspects: acceptance testing, payment and settlement.opposite math with opponents author.
- Supervisor close Board of Directors, Board thing union labour ty real presently Resolution decision belong to Grandfestival copper shareholders year 2026 .
- Perform other tasks as assigned by the Inspection Committee. check.
- Establish operating budget standards and implement measures to reduce costs by 10%.in rooms, friend.
- The reasonableness and legality of internal management documents issued by the Company. union.
- Review and verify compliance with resolutions and accounting laws. collaborate lymph nodes maths accountant, labour author establish newspaper urine talent main row year.
- Frequent update import ants awake new about chest treatment rack profession, chesttreatment risk ro, about tax, plan math, finance main.
- Conduct research and provide advice to the Board of Directors

and Management as needed. to best manage the risks in the company's business operations. ty.

VI. REPORT FOX FINANCE

establish

- Newspaper urine check math
- Board weigh opposite to plan maths
- Board conclude fruit Business Activities
- Newspaper urine save currency transfer

- Report finance Satisfied Okay posted on website death belong to Company at the local only:

<https://sara.com.vn/bao-cao-tai-chinh/>



Hanoi, April 18, 2026

SARA VIETNAM JOINT STOCK COMPANY



TỔNG GIÁM ĐỐC
Nguyễn Minh Tâm